

(Test Report)

(Sample Description)

(Date) 2022/07/02

1	Nickel foam
---	-------------

Appendix:

Test Item	Test Method/ Instrument	MDL	Limit
Lead (Pb)	IEC 62321-5:2013/ICP-OES	10mg/kg	≤1000mg/kg
Cadmium (Cd)	IEC 62321-5:2013/ ICP-OES	10mg/kg	≤100mg/kg
Mercury (Hg)	IEC 62321-4: 2013+A1:2017/ ICP-OES	10mg/kg	≤1000mg/kg
Non-metal Hexavalent Chromium (Cr ⁶⁺)	IEC 62321-7-2:2017/ UV-Vis	8mg/kg	≤1000mg/kg
Metal Hexavalent Chromium (Cr ⁶⁺)	IEC 62321-7-1:2015/ UV-Vis	0.1µg/cm ²	/
Polybrominated Biphenyls (PBBs) - -Monobromobiphenyl (MonoBB) - -Dibromobiphenyl (DiBB) - -Tribromobiphenyl (TriBB) - -Tetrabromobiphenyl (TetraBB) - -Pentabromobiphenyl (PentaBB) - -Hexabromobiphenyl (HexaBB) - -Heptabromobiphenyl (HeptaBB) - -Octabromobiphenyl (OctaBB) - -Nonabromodiphenyl (NonaBB) - -Decabromodiphenyl (DecaBB)	IEC 62321-6:2015/ GC-MS	Single 5mg/kg	Sum ≤1000mg/kg

Vritra Technologies

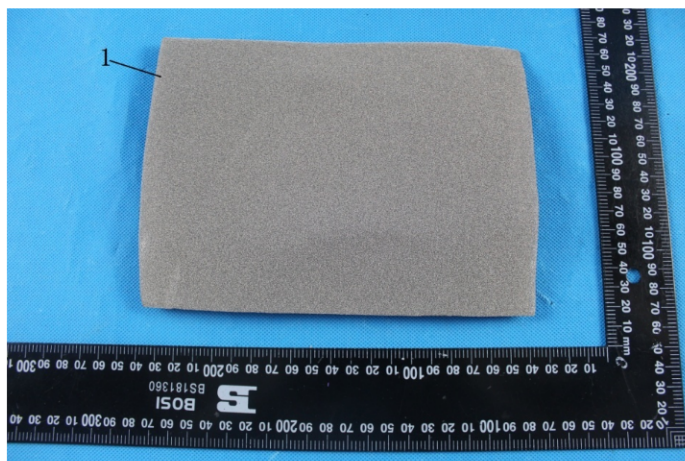
Address: 6, Malook Singh Marg, Street No.-1 West Arjun Nagar, Delhi-110051

Email: vritra@techie.com / info.vritratech@gmail.com

Test Item	Test Method/ Instrument	MDL	Limit
Polybrominated Diphenylethers (PBDEs) - Monobromodiphenyl ether (MonoBDE) - Dibromodiphenyl ether (DiBDE) - Tribromodiphenyl ether (TriBDE) - Tetrabromodiphenyl ether (TetraBDE) - Pentabromodiphenyl ether (PentaBDE) - Hexabromodiphenyl ether (HexaBDE) - Heptabromodiphenyl ether (HeptaBDE) - Octabromodiphenyl ether (OctaBDE) - Nonabromodiphenyl ether (NonaBDE) - Decabromodiphenyl ether (DecaBDE)	IEC 62321-6:2015/ GC-MS	Single 5mg/kg	Sum ≤1000mg/kg
Di-iso-butyl phthalate (DIBP)	IEC 62321-8:2017/ GC-MS	50mg/kg	≤1000mg/kg
Dibutyl phthalate (DBP)		50mg/kg	≤1000mg/kg
Butylbenzyl phthalate (BBP)		50mg/kg	≤1000mg/kg
Di-(2-ethylhexyl) Phthalate (DEHP)		50mg/kg	≤1000mg/kg

Note: Purity: 99.9%

(The photo of the sample)



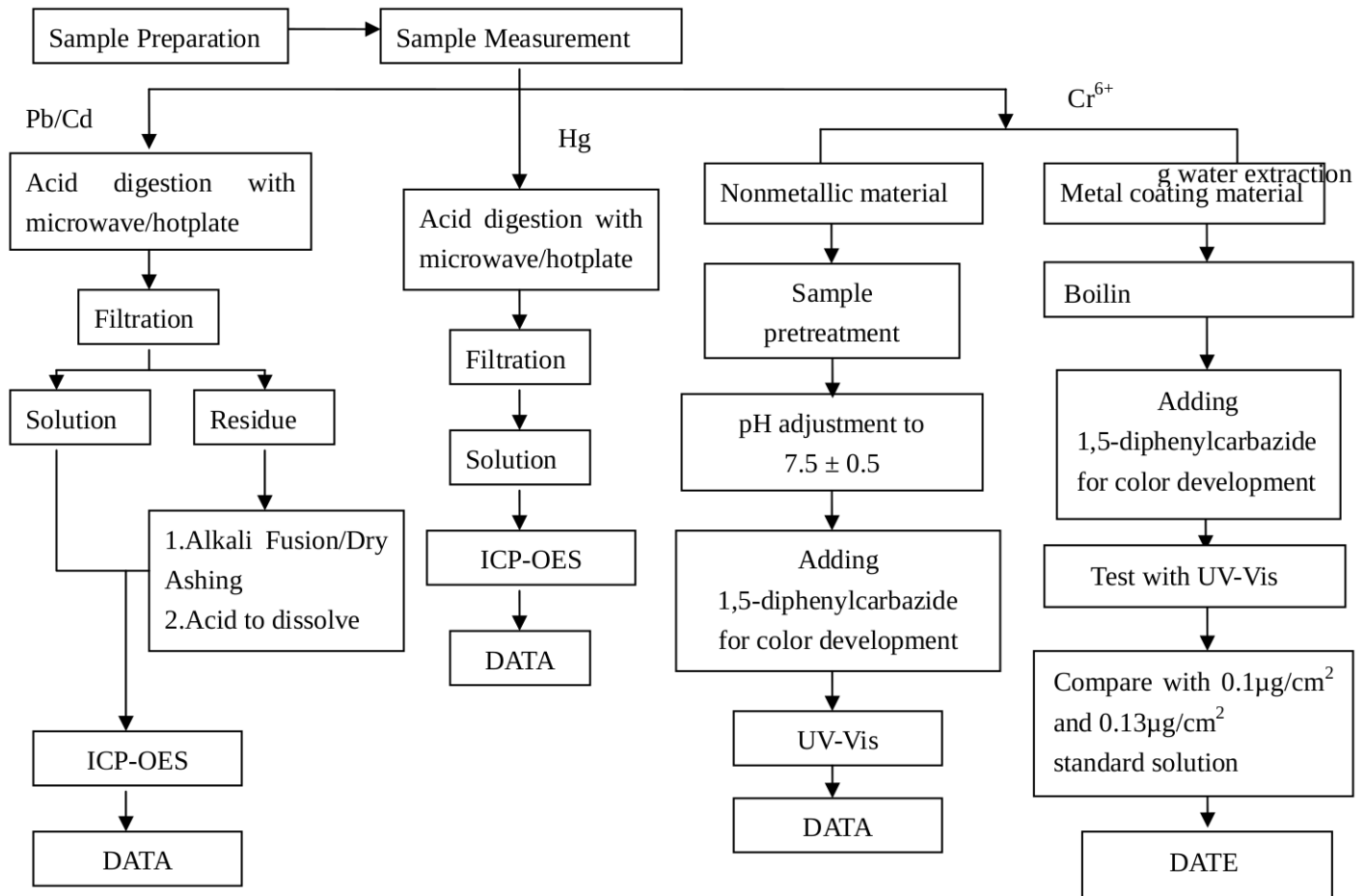
For VRITRA TECHNOLOGIES
Simon
 Partner

Vritra Technologies

Address: 6, Malook Singh Marg, Street No.-1 West Arjun Nagar, Delhi-110051
 Email: vritra@techie.com / info.vrtratech@gmail.com

Test Flow Chart

1. For Pb, Cd, Hg, Cr⁶⁺



These sample were dissolved totally by pre-conditioning method according to above flow chart (Cr⁶⁺ test method excluded)

2. The Test Flow Chart of PBBs, PBDEs, DBP, BBP, DEHP and DIBP

